

ENGLISH

DOXA

1 8 8 9

SWISS MADE

WARRANTY & INSTRUCTION BOOKLET

Congratulations on choosing this truly fine Swiss watch. Your **DOXA** watch has been manufactured to the highest standards of precision and reliability using advanced technology.

Each **DOXA** watch is marked with an individual serial number, which provides a record of origin and authenticity.

Your **DOXA** watch is warranted against any genuine manufacturing defects for two (2) years from date of purchase.

Warranty Restriction

Please note that your international warranty is only valid if it is accompanied by the attached International Warranty card. This warranty card must be completed in every part and signed by the authorized **DOXA** retailer where you bought your watch. The warranty card must bear the model number and the serial number of the watch, exact date of purchase and the chop of the authorized **DOXA** retailer.

This warranty does not cover the case, crystal, bracelet or strap, buckle or clasp or any damages caused by accident, mishandling, negligence or improper use as well as normal wear and tear or aging. Any repair or maintenance work carried out by unauthorized persons shall also automatically make this warranty null and void. In addition, this warranty does not cover batteries that operate quartz mechanism.

Your attention is drawn expressly that **DOXA** watches are not suitable for wearing while practicing extreme sports.

A fee will apply for repair beyond warranty coverage or period.

GENERAL INFORMATION

Quartz Watches

A quartz watch has a fresh battery designed to provide maximum reliability for approximately one (1) year under normal usage. If the battery is discharged, the watch will become inaccurate or even non-functional. The battery should be removed as soon as possible to prevent damages to the movement caused by leakage. The watch should be brought to an authorized retailer for battery replacement.

Mechanical Automatic Watches

When fully wound, the watch builds up a power reserve for approximately 36 hours. When a watch is first purchased or after a period of non-usage, it is recommended to wind it manually (for screw crown, unscrewed first so that it is free of the screw thread). In theory, tolerance of 30 seconds per day is considered normal.

Mechanical Hand-winding Watches

A non-automatic winding watch has to be wound manually. Do this preferably in the morning before you put on your watch. Only if the spring's tension is sufficient will your watch run properly during the day.

Water Resistance

When "3ATM" is marked on the case back of your watch, this means the watch is resistant to water at depths of 30 meters (5ATM=50 meters, 10ATM=100 meters). If there is no such marking, the watch is only moisture resistant and should not be put under water in any circumstances. Regardless of the water resistant level, your watch should not be worn under high mist environment such as sauna or steam room. If the watch is damaged by water leakage, please immediately seek an authorized retailer or service centre for repair.

TYPES OF WATCH CROWN

For regular crown

Position 0

Quartz watch: Normal position, it is waterproof and is ready to wear.

Mechanical watch: Normal position, rotate the crown clockwise (forward) to wind manually.



For screw crown

Position 0

Normal position, it is waterproof and is ready to wear. Before any settings, unscrew the crown in counterclockwise (backward) direction to Position 00, then follow the setting procedures.

Position 00

Rotate the crown clockwise (forward) for manual winding.



SETTING THE WATCH

Non-Date Models

- I) Pull out the crown to Position 1, all hands will stop.
- II) Turn the crown clockwise (forward) or counterclockwise (backward) to set the time.
- III) When the correct setting appears on the display, push the crown back to Position 0. The watch will operate normally.



***For screw crown, ensure it is fully screwed back to Position 0 for water tightness.**

Date Models

- I) Pull out the crown to Position 2, all hands will stop.
- II) Turn the crown clockwise (forward) or counterclockwise (backward) to set the time. The date will advance automatically at midnight.
- III) For rapid date adjustment, set the crown to Position 1. Turn the crown clockwise (forward) to adjust the date.
- IV) When the correct setting appears on the display, provided the correct AM/PM time has been set, push the crown back to Position 0. The watch will operate normally.

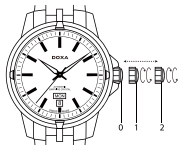


***For screw crown, ensure it is fully screwed back to Position 0 for water tightness.**

Important note: Do not make any adjustments when your watch shows a time between 8:00 p.m. to 4:00 a.m. During this time slot, several complex operations take place and any outside interference may damage the movement.

Date/Day Models

- I) Pull out the crown to Position 2, all hands will stop.
- II) Turn the crown clockwise (forward) or counterclockwise (backward) to set the time. The date and day will advance automatically at midnight.
- III) For rapid date and day adjustment, set the crown to Position 1. Slowly turn the crown clockwise (forward) to adjust the date and turn the crown counterclockwise (backward) to adjust the day.
- IV) When the correct setting appears on the display, provided the correct AM/PM time has been set, push the crown back to Position 0. The watch will operate normally.



***For screw crown, ensure it is fully screwed back to Position 0 for water tightness.**

Important note: Do not make any adjustments when your watch shows a time between 8:00 p.m. to 4:00 a.m. During this time slot, several complex operations take place and any outside interference may damage the movement.

Dual Time Models

- I) Pull out the crown to Position 2, all hands will stop.
- II) Turn the crown clockwise (forward) or counterclockwise (backward) to set the time. The date will advance automatically at midnight.
- III) In Position 1, turn the crown clockwise (forward) to adjust the 24 hour hand and turn the crown counterclockwise (backward) to adjust the date.
- IV) When the correct setting appears on the display, provided the correct AM/PM time has been set, push the crown back to Position 0. The watch will operate normally.



***For screw crown, ensure it is fully screwed back to Position 0 for water tightness.**

Important note: Do not make any adjustments when your watch shows a time between 8:00 p.m. to 4:00 a.m. During this time slot, several complex operations take place and any outside interference may damage the movement.

Chronograph Models

Setting the time, day, date, month and moon phase

- I) Pull out the crown to Position 2, all hands will stop.
- II) Turn the crown clockwise (forward) or counterclockwise (backward) to set the time. The day will advance automatically at midnight.
- III) In Position 1, turn the crown clockwise (forward) to adjust the moon phase and turn counterclockwise (backward) to adjust the date.
- IV) When the date changes from 31st to 1st, the month indicator advances by one month.
- V) When all correct setting appears on the display, provided the correct AM/PM time has been set, push the crown back to Position 0. The watch will operate normally.



***For screw crown, ensure it is fully screwed back to Position 0 for water tightness.**

Setting the stopwatch

- The stopwatch can measure up to 12 hours in 1/4 seconds.
- The stopwatch has swept second hand, its hour hand (hour counter) moves smoothly, its minute hand (minute counter) moves at one minute intervals.
- After 12 hours, it will start counting again from "0".
- To start and to stop - press the Push button B.
- To reset - press the Push button C.

Standard measurement

B → B → C
Start Stop Reset

Accumulated elapsed time measurement

B → B → B ... B → C
Start Stop Restart Stop Reset

***Button A is the reset button, never press it while the chronograph is running, it can damage the movement.**

Important note: Do not make any adjustments when your watch shows a time between 8:00 p.m. to 4:00 a.m. During this time slot, several complex operations take place and any outside interference may damage the movement.